



MCE 
MOTION & CONTROL ENTERPRISES

HIGH-PRESSURE SOLENOID GREASE VALVE CLASS 208

WWW.MCEAUTOMATION.COM

Features

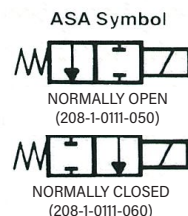
The MCE High Pressure Solenoid Grease Valve is designed for individual control of lubricant volume and delivery frequency to several different locations from a single pressure source. This rugged, heavy-duty design handles grease or oil interchangeably, assures consistent operations at high temperatures and working pressures, and will operate in any position. It is supplied in either normally closed (N.C.) or normally open (N.O.) configurations for shutoff (N.C.) or dump (N.O.) service.

To assure optimum performance at high pressures, the valve's balanced slide and seals are individually honed and lapped. An oversized, dual-frequency solenoid assembly provides rapid shifting, has high resistance to burnout, and assures long, trouble-free operation. The solenoid's aluminum housing allows ample room for wiring connections and—where local codes permit—can serve as a junction box. In addition, a manual override button on top of the housing allows valve operation during system servicing, checkout, or in the event of a power failure. Piping connections are also simplified by the valve's inline port arrangement.

Applications

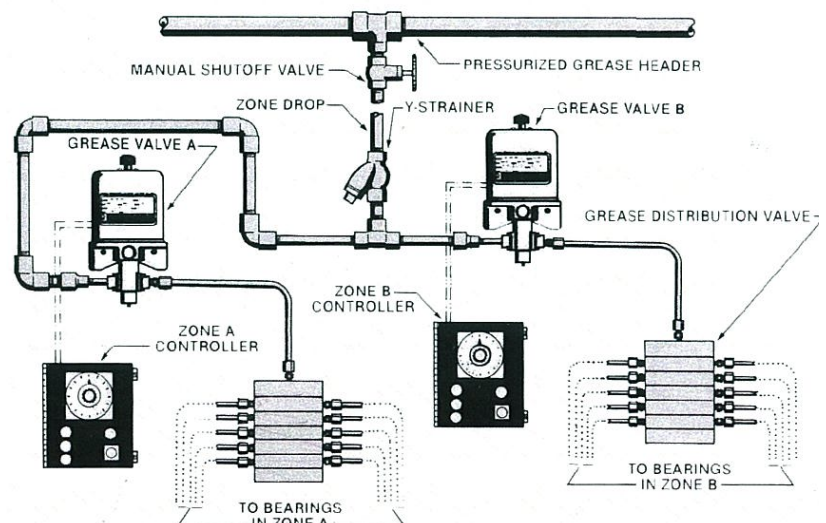
The Solenoid Grease Valve is used for bulk (utility) grease or oil systems in industrial plants for multi-zone lubrication systems on large machinery.

Typical multi-zone uses include blast furnaces, rolling mills, stacker-unloader equipment, large power presses, foundry machinery, glass making equipment and similar types of heavy duty lubricating applications.



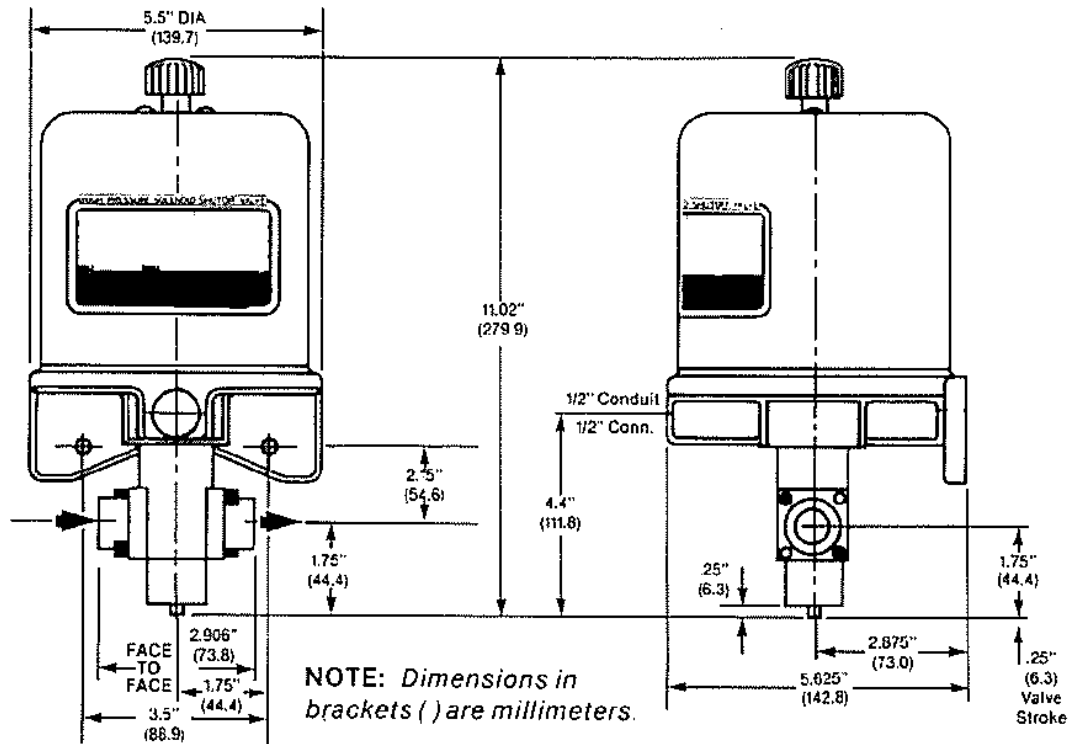
- **Handles grease or oil interchangeably**
- **Provides flow control to different locations from one pressure source**
- **Operates at 4000 psi at temps to 160°F**

Typical Installation



HIGH-PRESSURE **SOLENOID GREASE VALVE CLASS 208**

ENVELOPE & MOUNTING DIMENSIONS



Specifications

MECHANICAL

Materials: SLIDE, SEALS, SPRING—stainless steel; BODY, SOLENOID COVER, TRANSITION BRACKET—aluminum alloy; NONMETALLIC SEALS—Buna-N O-rings with Teflon backup rings.

Pressures: Working 4000 psi (281 kg/cm²).

Temperatures: 0 to 160°F (-18 to 74°C).

Service: Any pumpable lubricating grease or oil.

Flow: Rates vary with different greases and oils, depending on viscosity, temperature, and pumpability. Rating for any specific lubricant can be supplied on request; a 10-lb (minimum) sample of the lubricant is required.

Port Sizes: 3/8" NPTF inlet and outlet.

C_v Factor: 0.28.

Leakage: External—0; Internal—1 dpm.

Weight: 7 lb. 13 oz (3.54 kg).

ELECTRICAL

Duty: Continuous.

Voltages: 115 volts, 60 Hz (standard), Other voltages are available, consult factory for details.

Amperage: 50 Hz: 6.5 Inrush: 1.1 Holding. 60 Hz: 7.3 Inrush: 1.3 Holding.

Conduit Collection: 1/2" NPSF. Coils furnished with three 30" leads.

Specifications subject to change without notice.

ORDERING DATA:

Normally Open:	208-1-0111-050
Normally Closed:	208-1-0111-060

RITTERTECH

a division of **MCE**

100 Williams Drive • Zelienople, PA • 16063

P: 724.452.6000 • F: 724.452.0766

www.mceautomation.com